



Work Wear Corp.

— Workwear Catalogue

CONTELL SUITS

Pages
2 — 15





STYLE 3333

TWO PIECE CONTI SUIT

TWEE STUK KONTINENTALE OORPAK

JACKET / BAADJIE

- Concealed zip front
- Monza pocket
- 2 x Side patch pockets
- Safety stitch on all pockets
- All stress points bartacked

TROUSERS / BROEK

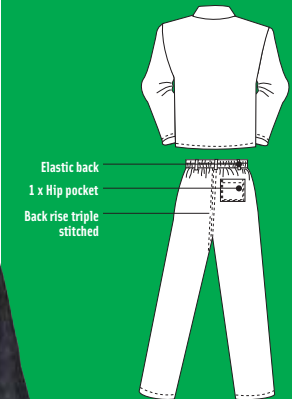
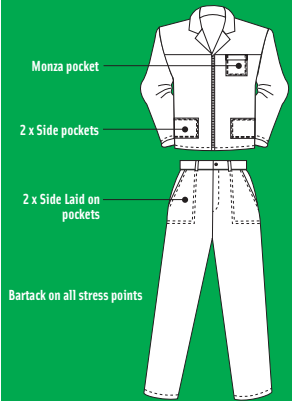
- Semi elasticated waist
- 2 x Side laid on pockets
- Zip fly - Stud fastening on waistband
- All stress points bartacked
- Triple stitched back rise
- Safety stitch in and outleg
- Sizes 34-54



STYLE 3333

© 2004 - ICC

Jacket concealed zip. Double row stitch on all pockets.



CONTI SUITS

CONTI SUITS



BLUE INDIGO DENIM 10 OZ HEAVY DUTY INDIGO DENIM 100% COTTON

RISE PER SIZE APPLIES



FIT FOR THE JOB
WORKWEAR GARMENTS®

UNWASHED DENIM



STYLE 3333

TWO PIECE CONTI SUIT

TWEE STUK KONTINENTALE OORPAK

JACKET / BAADJIE

- Concealed zip front
- Monza pocket
- 2 x Side patch pockets
- Safety stitch on all pockets
- All stress points bartacked

TROUSERS / BROEK

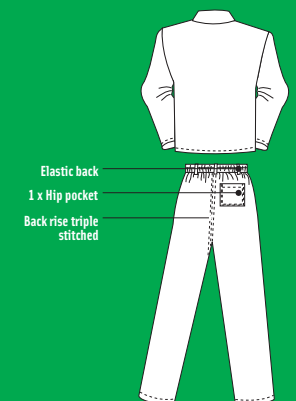
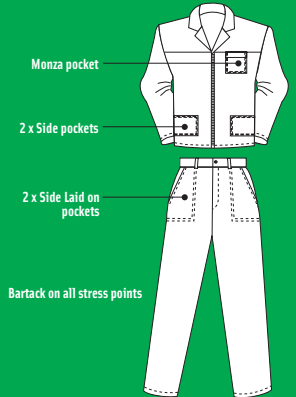
- Semi elasticated waist
- 2 x Side laid on pockets
- Zip fly - Stud fastening on waistband
- All stress points bartacked
- Triple stitched back rise
- Safety stitch in and outleg
- Sizes 34-54



STYLE 3333

© 2004 - ICC

Jacket concealed zip. Double row stitch on all pockets.



ROYAL BLUE	100% COTTON J54
------------	-----------------

ROYAL BLUE	POLYCOTTON
------------	------------

RISE PER SIZE APPLIES

WHITE	POLYCOTTON
-------	------------

YELLOW	POLYCOTTON
--------	------------

RED	POLYCOTTON
-----	------------

EMERALD GREEN	POLYCOTTON
---------------	------------

GREY	POLYCOTTON
------	------------

KHAKI	POLYCOTTON
-------	------------

ORANGE	POLYCOTTON
--------	------------

BLACK	POLYCOTTON
-------	------------

NAVY BLUE	POLYCOTTON
-----------	------------

RISE PER SIZE APPLIES

NEW

NAVY BLUE	100% COTTON J54
-----------	-----------------

FERN GREEN	FLAME RETARDANT
------------	-----------------

BOTTLE GREEN	ACID RESISTANT
--------------	----------------





STYLE 3333

TWO PIECE CONTI SUIT

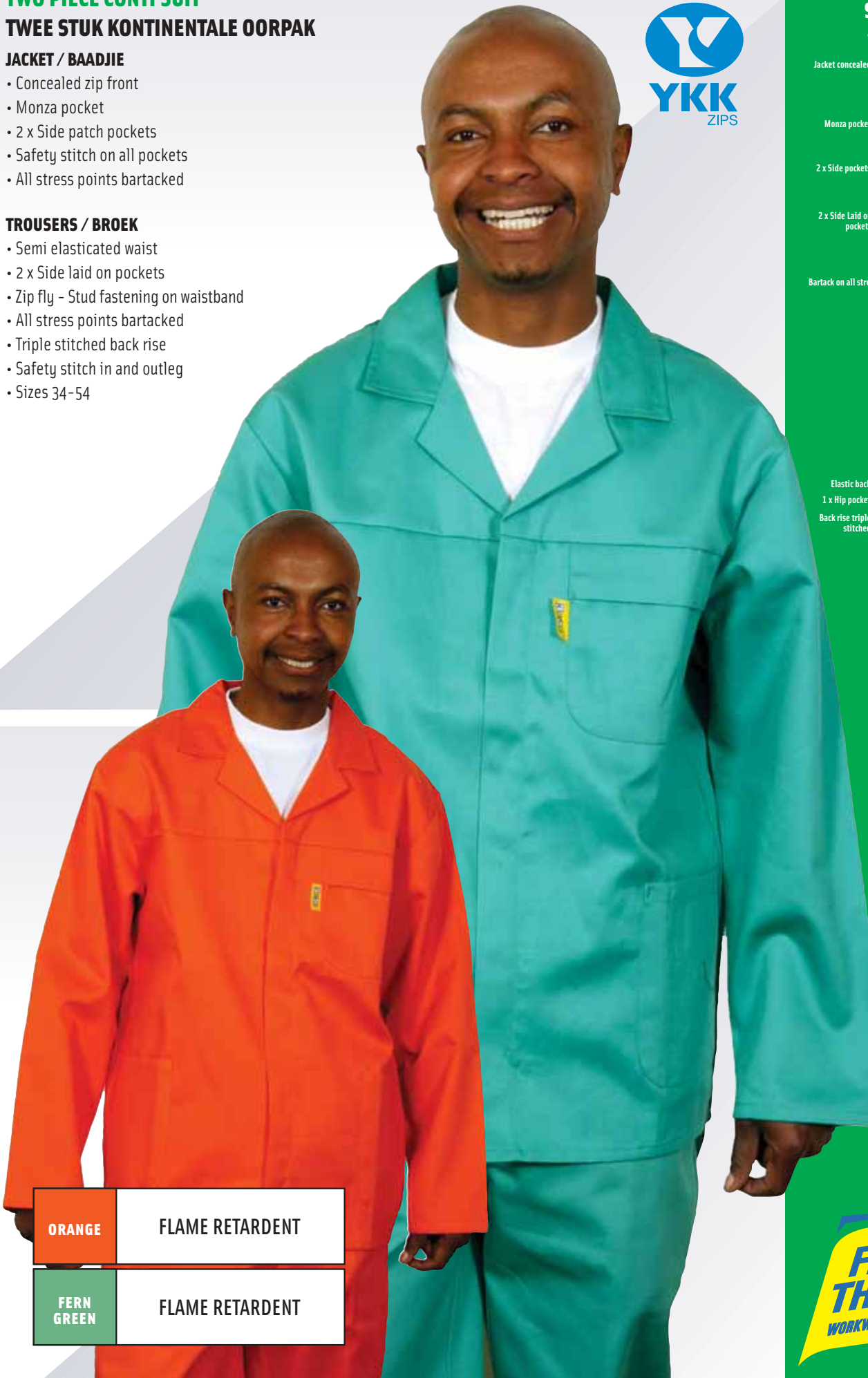
TWEE STUK KONTINENTALE OORPAK

JACKET / BAADJIE

- Concealed zip front
- Monza pocket
- 2 x Side patch pockets
- Safety stitch on all pockets
- All stress points bartacked

TROUSERS / BROEK

- Semi elasticated waist
- 2 x Side laid on pockets
- Zip fly - Stud fastening on waistband
- All stress points bartacked
- Triple stitched back rise
- Safety stitch in and outleg
- Sizes 34-54



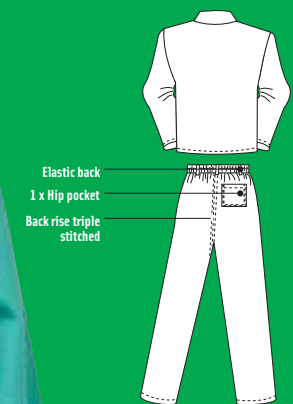
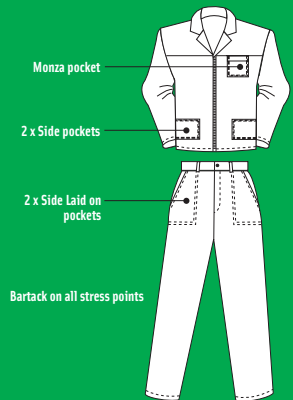
ORANGE	FLAME RETARDENT
--------	-----------------

FERN GREEN	FLAME RETARDENT
------------	-----------------

STYLE 3333

© 2004 - ICC

Jacket concealed zip. Double row stitch on all pockets.



CONTI SUITS

CONTI SUITS





STYLE 4007

TWO PIECE CONTI SUIT

TWEE STUK KONTINENTALE OORPAK

JACKET / BAADJIE

- Concealed zip front
- Monza pocket
- 2 x Side patch pockets
- Safety stitch on all pockets
- All stress points bartacked
- 48mm Lime/silver/lime reflective tape stitched across biceps, chest & back

TROUSERS / BROEK

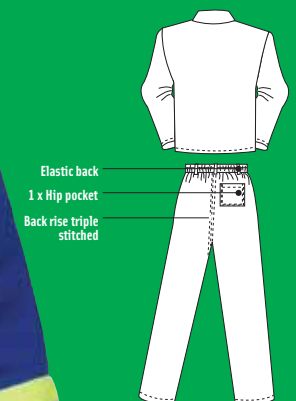
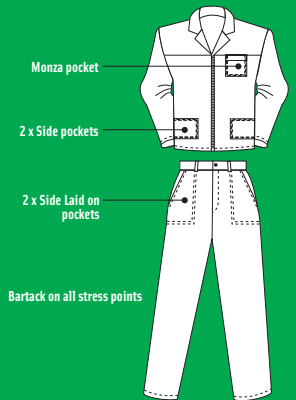
- Semi elasticated waist
- 2 x Side laid on pockets
- Zip fly - Stud fastening on waistband
- All stress points bartacked
- Triple stitched back rise
- Safety stitch in and outleg
- Sizes 34-54
- 48mm Lime/silver/lime reflective tape stitched across circumference of thighs



STYLE 3333

© 2004 - ICC

Jacket concealed zip. Double row stitch on all pockets.



ROYAL BLUE POLYCOTTON
RISE PER SIZE APPLIES





STYLE 3333

TWO PIECE CONTI SUIT

TWEE STUK KONTINENTALE OORPAK

JACKET / BAADJIE

- Concealed zip front
- Monza pocket
- 2 x Side patch pockets
- Safety stitch on all pockets
- All stress points bartacked

TROUSERS / BROEK

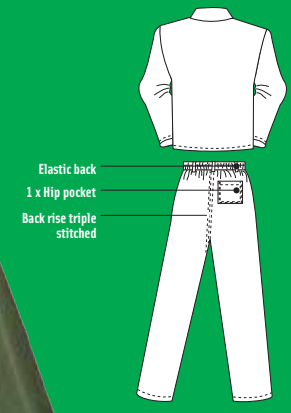
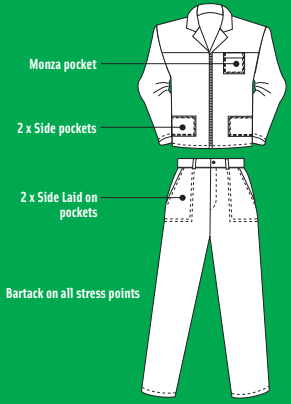
- Semi elasticated waist
- 2 x Side laid on pockets
- Zip fly - Stud fastening on waistband
- All stress points bartacked
- Triple stitched back rise
- Safety stitch in and outleg
- Sizes 34-54



STYLE 3333

© 2004 - ICC

Jacket concealed zip. Double row stitch on all pockets.



BOTTLE GREEN	ACID RESISTANT
---------------------	-----------------------

Work Wear Corp.	7
------------------------	----------



CONTI SUITS

CONTI SUITS



STYLE 3001

TWO PIECE CONTI SUIT

TWEE STUK KONTINENTALE OORPAK

JACKET / BAADJIE

- Concealed zip front
- Stud fastening on breast pocket
- 2 x Side welted pockets
- All stress points bartacked

TROUSERS / BROEK

- Semi elasticated waist
- 2 x Side pockets
- Zip fly
- Money pocket
- All stress points bartacked
- Triple stitched back rise
- Triple stitched in-leg
- Sizes 34-54



ROYAL BLUE	POLYCOTTON
RISE PER SIZE APPLIES	

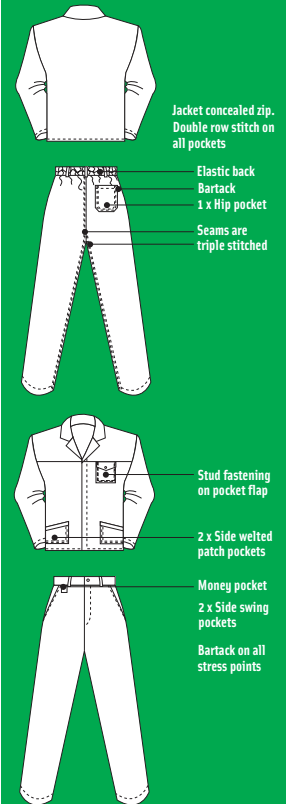
YELLOW	POLYCOTTON
RED	POLYCOTTON
EMERALD GREEN	POLYCOTTON
GREY	POLYCOTTON
CHOC BROWN	POLYCOTTON
WHITE	POLYCOTTON
KHAKI	POLYCOTTON
ORANGE	POLYCOTTON
BLACK	POLYCOTTON
NAVY BLUE	POLYCOTTON

RISE PER SIZE APPLIES



STYLE 3001

© 2004 - ICC





STYLE 3001 SAB 434

TWO PIECE CONTI SUIT

TWEE STUK KONTINENTALE OORPAK

JACKET / BAADJIE

- Concealed zip front
- Stud fastening on breast pocket
- 2 x Side welted pockets
- All stress points bartacked
- All seams triple stitched

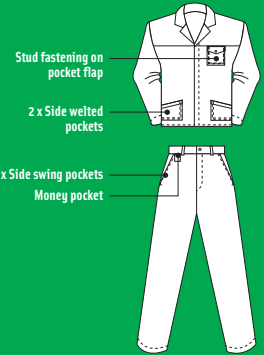
TROUSERS / BROEK

- Semi elasticated waist
- 2 x Side pockets
- Zip fly
- Stud fastening on waistband
- All stress points bartacked
- Triple stitched back rise
- Triple stitched in and outleg
- Sizes 34-54



STYLE 3001 SAB 434

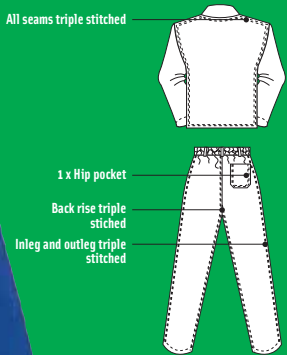
© 2004 - ICC



Jacket concealed zip. Double row stitch on all pockets.

3001 SAB 434 This garment is made in accordance to the SABS 434 specifications

All seams triple stitched



HEAVY DUTY SERIES

ROYAL BLUE	100% COTTON HEAVY DUTY 270 g/sgm
------------	--

J54 SERIES

ROYAL BLUE	100% COTTON J54 SABS 225 g/m ²
RED	100% COTTON J54 SABS 225 g/m ²
NAVY BLUE	100% COTTON J54 SABS 225 g/m ²

RISE PER SIZE APPLIES



CONTI SUITS

CONTI SUITS



STYLE 3001

TWO PIECE CONTI SUIT

TWEE STUK KONTINENTALE OORPAK

JACKET / BAADJIE

- Concealed zip front
- Stud fastening on breast pocket
- 2 x Side welted pockets
- All stress points bartacked
- All seams triple stitched

TROUSERS / BROEK

- Semi elasticated waist
- 2 x Side pockets
- Zip fly - Stud fastening on waistband
- All stress points bartacked
- Triple stitched back rise
- Triple stitched in and outleg
- Sizes 34-54

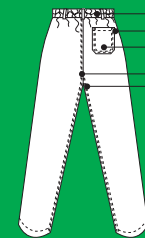


STYLE 3001

© 2004 - ICC



Jacket concealed zip.
Double row stitch on all pockets



Elastic back
Bartack
1 x Hip pocket



Stud fastening on pocket flap
2 x Side welted patch pockets



Money pocket
Bartack on all stress points

BLUE INDIGO DENIM | **10 OZ HEAVY DUTY INDIGO DENIM 100% COTTON**
RISE PER SIZE APPLIES



STONED WASHED DELUXE DENIM





Work Wear Corp.

STYLE 3001

TWO PIECE CONTI SUIT

TWEE STUK KONTINENTALE OORPAK

JACKET / BAADJIE

- Concealed zip front
- Stud fastening on breast pocket
- 2 x Side welted pockets
- All stress points bartacked

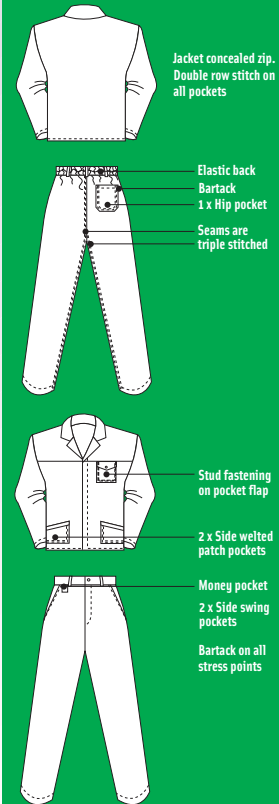
TROUSERS / BROEK

- Semi elasticated waist
- 2 x Side pockets
- Zip fly
- Money pocket
- All stress points bartacked
- Triple stitched back rise
- Triple stitched in-leg
- Sizes 34-54



STYLE 3001

© 2004 - ICC



CONTI SUITS

CONTI SUITS

BLUE INDIGO DENIM 10 OZ HEAVY DUTY INDIGO DENIM 100% COTTON

RISE PER SIZE APPLIES

UNWASHED DENIM





STYLE 3001 SAB 434

TWO PIECE CONTI SUIT

TWEE STUK KONTINENTALE OORPAK

JACKET / BAADJIE

- Concealed zip front
- Stud fastening on breast pocket
- 2 x Side welted pockets
- All stress points bartacked
- All seams triple stitched

TROUSERS / BROEK

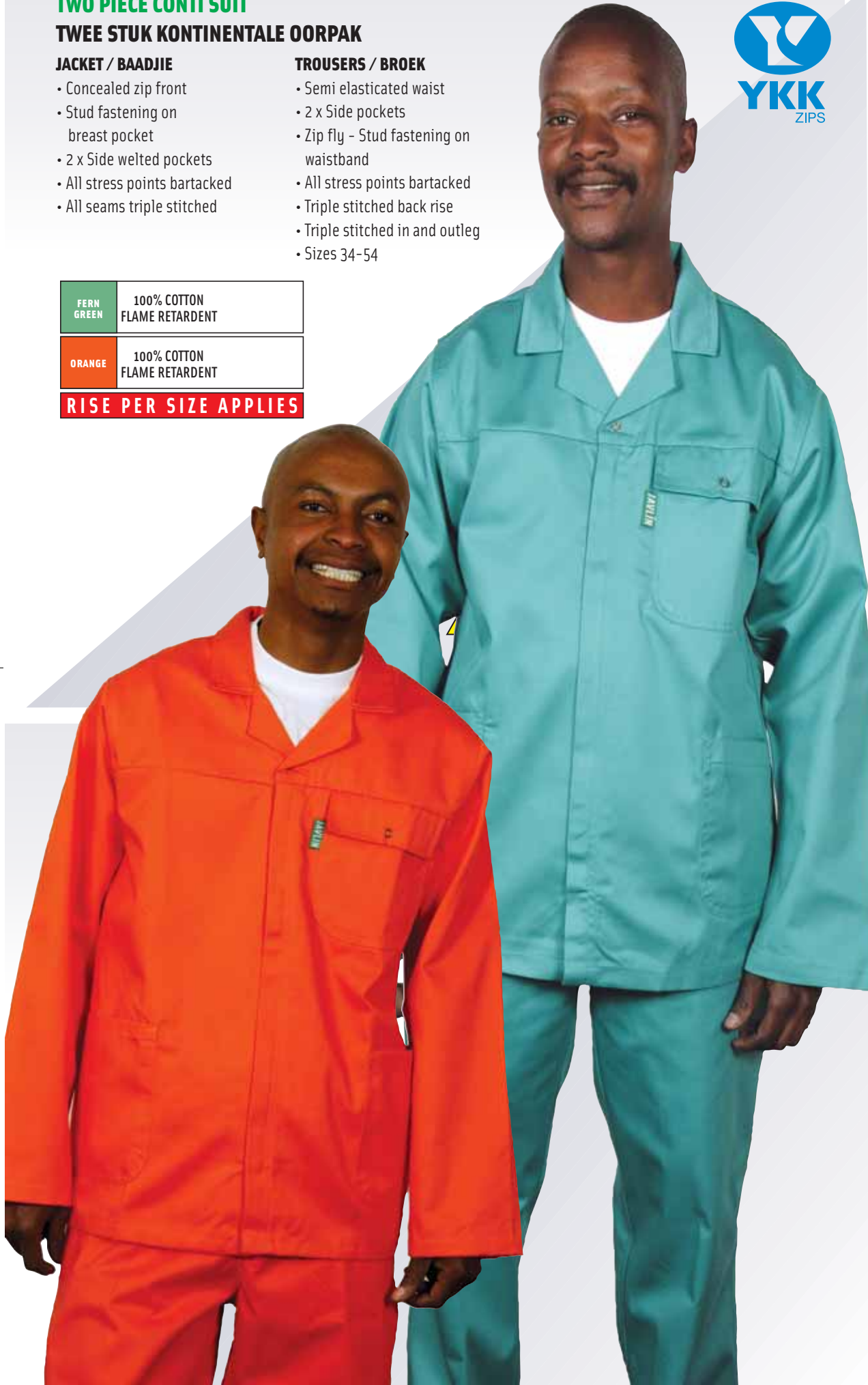
- Semi elasticated waist
- 2 x Side pockets
- Zip fly - Stud fastening on waistband
- All stress points bartacked
- Triple stitched back rise
- Triple stitched in and outleg
- Sizes 34-54



FERN GREEN	100% COTTON FLAME RETARDENT
------------	--------------------------------

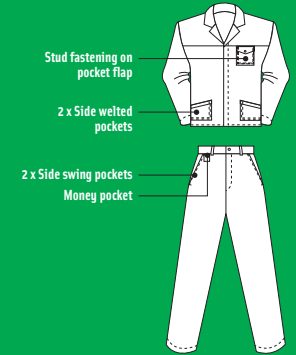
ORANGE	100% COTTON FLAME RETARDENT
--------	--------------------------------

RISE PER SIZE APPLIES



STYLE 3001 SAB 434

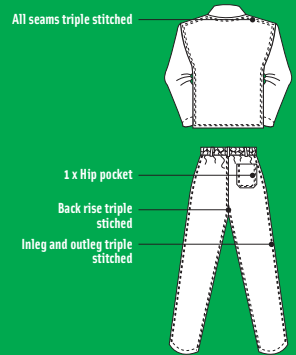
© 2004 - ICC



Jacket concealed zip. Double row stitch on all pockets.

3001 SAB 434 This garment is made in accordance to the SABS 434 specifications

All seams triple stitched





STYLE 3001

TWO PIECE CONTI SUIT

TWEE STUK KONTINENTALE OORPAK

JACKET / BAADJIE

- Concealed zip front
- Stud fastening on breast pocket
- 2 x Side welted pockets
- All stress points bartacked

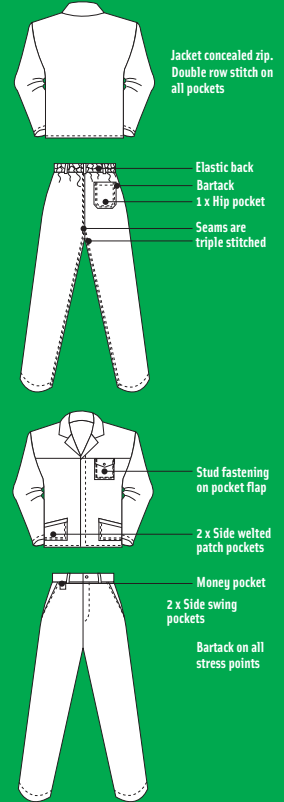
TROUSERS / BROEK

- Semi elasticated waist
- 2 x Side pockets
- Zip fly
- Money pocket
- All stress points bartacked
- Triple stitched back rise
- Triple stitched in-leg
- Sizes 34-54



STYLE 3001

© 2004 - ICC



CONTI SUITS

CONTI SUITS



BOTTLE GREEN 65/35 POLYCOTTON ACID RESISTANT

RISE PER SIZE APPLIES

NEW

BOTTLE GREEN INTERWOVEN OIL PROOF, ACID PROOF & WATERPROOF

RISE PER SIZE APPLIES





STYLE 3727

TWO PIECE CONTI SUIT WITH REFLECTIVE TAPE

TWEE STUK KONTINENTALE OORPAK

JACKET / BAADJIE

- Concealed zip front
- Stud fastening on breast pocket
- 2 x Side welted pockets
- All stress points bartacked
- All seams triple stitched

TROUSER / BROEK

- Semi elasticated waist
- 2 x Side laid on pockets
- Zip fly-stud fastening on waistband
- All stress points bartacked
- All seams triple stitched
- 48mm Lime/silver/lime reflective tape stitched across circumference of thighs

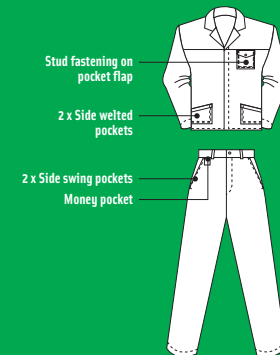
ROYAL BLUE

**J54 100% COTTON
48MM LIME/SILVER/LIME
REFLECTIVE TAPE**



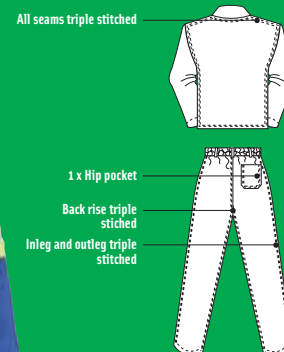
STYLE 3001 SAB 434

© 2004 - ICC



Jacket concealed zip. Double row stitch on all pockets.

3001 SAB 434 This garment is made in accordance to the SABS 434 specifications



**CODE RT19S
19mm Silver**

REFLECTIVE TAPE

**CODE RT48S
48mm Silver**

REFLECTIVE TAPE

**CODE RT48RS19
48mm Red/Silver/Red**

ALL REFLECTIVE TAPE IS SOLD PER ROLL OF 50M / 100M

**CODE RT48LS19
48mm Lime/Silver/Lime**





STYLE 3833

TWO PIECE CONTI-SUIT WITH REFLECTIVE TAPE

TWEE STUK KONTINENTALE OORPACK

JACKET / BAADJIE

- Concealed zip front
- Stud fastening on breast pocket
- 2 x Side welted pockets
- All stress points bartacked
- All seams triple stitched
- 19mm Silver reflective tape stitched across biceps and chest, 1 x 28cm x 28cm cross on back

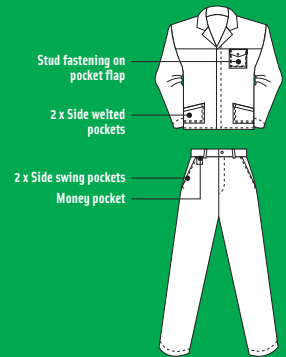
TROUSER / BROEK

- Semi elasticated waist
- 2 x Side laid on pockets
- Zip fly-stud fastening on waistband
- All stress points bartacked
- All seams triple stitched
- 19mm Silver reflective tape stitched across circumference of thighs
- Sizes 34-54



STYLE 3001 SAB 434

© 2004 - ICC



Jacket concealed zip. Double row stitch on all pockets.

3001 SAB 434 This garment is made in accordance to the SABS 434 specifications



ROYAL BLUE 100% COTTON / HEAVY DUTY
19MM SILVER REFLECTIVE TAPE